

Product Data Sheet



PRODUCT NAME: SS-H/SS-D Base

DESCRIPTION: Stainless steel plate with galvanized strut base used to act as a foot for hanging supports, duct supports, and other custom frame supports. The larger surface area of the foot helps to distribute the load of the supported item over a larger area, thus reducing the load on any single point.

COMPOSITION AND MATERIALS:

Base: 16 gauge stainless steel

Strut Base: Galvanized steel

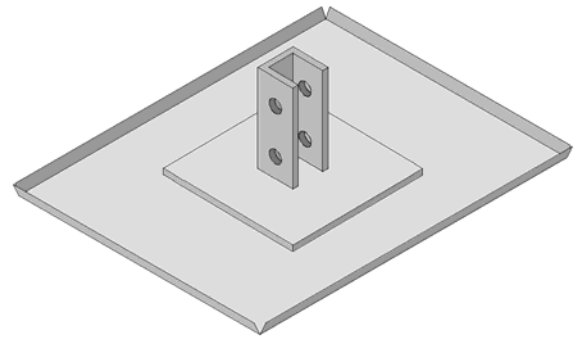
COMPATABILITY: Compatible with the most commonly used strut size. B22 which measures 1.625" x 1.625"

SIZE:

Base measures 14" x 11"

LOAD WEIGHT: Weight should not exceed 150lbs per base.

SPACING: A minimum of 2 bases should be used per pipe support. Spacing between each pipe support should not exceed 10ft. Closer spacing may be necessary to prevent loads greater than 150 lbs per base.



INSTALLATION:

- (1) Place the base on a flat surface.
- (2) Insert the unistrut into the base and push the unistrut all the way down so that the tip touches the flat surface of the strut base.
- (3) Insert 2 bolts and 2 nuts. Tighten.

MAINTENANCE: A bi-annual inspection of position, alignment, and weight distribution is required to prevent damage or failure.

RoofStuff, Inc.
3626 N Hall St. Suite 703
Dallas, TX 75219
(214) 224-0055
(214) 224-0988 (fax)
www.roofstuffinc.com

Limited Warranty: All products sold are subject to the following limited warranty. RoofStuff, Inc. warrants for a period of one year from date of delivery the product is free from defects in material and workmanship. RoofStuff, Inc. makes no other express representation or warranty of any kind, in fact or in law, including without limitation, the warranty of merchantability or the warranty of fitness for a particular purpose, other than the limited warranty set forth above. Every claim under this warranty shall be deemed waived unless made in writing and received by RoofStuff, Inc. within thirty (30) days of the date the defect to which each claim relates is discovered or should have been discovered.

Limitations of Liability: It is expressly understood and agreed that the limit of RoofStuff, Inc.'s liability shall be to re-supply an equal or equivalent quantity and that RoofStuff, Inc. shall have no such liability except where the damage or claim results solely from breach of RoofStuff, Inc.'s warranty. RoofStuff, Inc. shall not be liable for any incidental, consequential, or other damages, for any alleged negligence, breach of warranty, strict liability or any other theory, other than the limited liability set forth above.

RoofStuff, Inc.'s warranties will not apply if a pipe, conduit, or other object, is resting upon a support with a force exceeding 150 pounds per base or 300 lbs total. Likewise, RoofStuff, Inc.'s warranties will not apply if the supported structure is not the type of device or object for which RoofStuff, Inc. pipe supports are designed, intended or constructed to support. RoofStuff, Inc.'s warranties will not apply if installation is done in an improper manner.

RoofStuff, Inc.

3626 North Hall Street

Suite 703

Dallas, Texas 75219

214-224-0055

info@roofstuffinc.com

SS-H/SS-D BASE

